

A compact, versatile printer for **professional results**



✔ Prints full-colour posters, banners, backlit panels, POS displays, notices, signs and stickers

✔ Durable images on coated & uncoated substrates up to 1300 mm (51") wide

✔ Impeccable print quality every time with Mutoh i<sup>2</sup> technology

✔ Rapid return on investment thanks to versatile performance and attractive price

✔ Easy to use and compact, with eco-inks for problem-free printing in normal environments



# ValueJet 1204: the compact eco-solvent printer from Mutoh



The ValueJet 1204 is designed specifically with starting-out full-colour sign makers in mind. It is a compact eco-solvent printer that will also appeal to established businesses with water-based inkjet printers looking for an affordable printer to produce outdoor durable prints, even on uncoated substrates. Excellent quality output means this versatile performer makes a perfect addition for the smaller jobs in an existing wide-format print shop.

Suited to indoor and outdoor applications, the ValueJet 1204 produces full-colour posters, banners, backlit panels, POS displays, external notices for buildings, production plants and construction sites as well as adhesive signs and stickers.

Innovative and easy-to-use, the ValueJet 1204 uses Mutoh third generation of Eco-Solvent inks, making it suitable for operation in any working environment. Mutoh's patent pending i<sup>2</sup> Intelligent Interweave printing technology produces impeccable prints every time on media up to 1300 mm (51").

This CMYK printer can handle 2" and 3" rolls and cut sheet media and incorporates three individually controlled heating elements for media acclimatisation, ink fixation and drying of the prints.

## New generation "wide model" 1440 dpi piezo print head



The ValueJet 1204 uses the industry's smallest available drop-let size of 3.5 pl, thanks to a new generation piezo drop-on-demand variable drop "wide model" print head. This 1440-nozzle head incorporates four colour sections, each divided in two nozzle rows with 360 nozzles per colour. Because all the colour sections are united in one head, there is no need for time-consuming head-to-head calibration procedures. The printer head comes complete with a 12-month warranty.

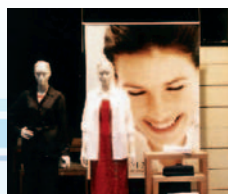
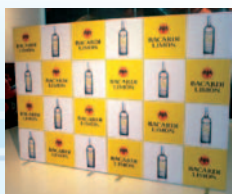
## Eco-Solvent Ultra Ink



Eco-Solvent Ultra inks from Mutoh are based on non-aggressive solvents. As they do not spread any harmful VOCs in the working environment, there is no need for forced ventilation. Eco-Solvent Ultra inks are Mutoh's third generation of eco-inks and feature improved ink fixation, better drying, higher print speeds, and improved scratch resistance.

The ValueJet 1204 printer is ideally suited to deliver top quality images when printing directly onto a wide range of low-cost standard available uncoated PVC and scrim banner media.

ValueJet Eco-Solvent Ultra inks come in easy-to-use 220 ml ink cassettes.



## 3 Years outdoor

Prints made with Mutoh's Eco-Solvent Ultra inks are UV and water resistant for up to three years outdoors, without lamination<sup>(1)</sup>.

<sup>(1)</sup> : Lamination is recommended for fleet, floor graphics and other applications where prints are exposed to intensive mechanical stress or abrasion.

## 12 pre-defined print modes

Four print resolutions offered — 540 x 720 dpi, 720 x 720 dpi, 1440 x 720 dpi & 1440 x 1440 dpi — and, with starting-out full-colour sign makers in mind, 12 different print modes have been pre-defined. These are in three groups: Quality Mode<sup>(1)</sup>, Graphics Mode<sup>(2)</sup> and Banner Mode<sup>(3)</sup>. Pre-defined print modes mean ValueJet users do not need to choose printing passes, resolutions or other manual settings. Simply activate a pre-defined mode via the RIP software or directly on the printer's operation panel.

<sup>(1)</sup> Typical photographic quality mode (pictures)

<sup>(2)</sup> Typical "vinyl" production mode (signs)

<sup>(3)</sup> Typical high speed banner outdoor mode.

## Speed performance

The ValueJet 1204 provides typical production speeds on banner media up to 14 m<sup>2</sup>/h and up to 7 m<sup>2</sup>/h on self-adhesive uncoated PVC.

## Wide choice of media

The ValueJet 1204 prints onto eco-coated, coated and even uncoated media thanks to the combination of the piezo print head, the characteristics of Eco-Solvent Ultra inks and the three built-in digitally controllable heating elements. These heating elements control and optimize media acclimatisation, ink fixation and drying of the prints.



## Fast return on Investment

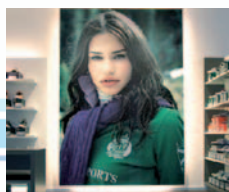
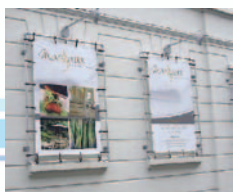
Rapid return on investment is available to beginners as well as skilled operators. The combination of affordable pricing, ease of use with consistent high quality output, flexibility for switching quickly between print jobs and low ink consumption (average 8 ml/m<sup>2</sup> on uncoated PVC) means the ValueJet 1204 will swiftly turn investment into profit.

## Print & Cut

Print and cut simultaneously by running your ValueJet 1204 printer in tandem with a Mutoh multi-purpose Ultima contour cutter.

The user-friendly Ultima cutting plotter is ready to tackle all your contour cutting applications such as stickers, short-run decals, window signs and much more. Thanks to Mutoh's patented Epos-technology and a unique job recognition feature, contour cutting is performed with virtually no user intervention required. The Ultima contour cutter is an excellent addition to the ValueJet 1204 for anyone starting out as a full colour sign maker.

Find more about Mutoh's Print & Cut solution @ [www.mutoh.be](http://www.mutoh.be) / [www.mutoh.eu](http://www.mutoh.eu)



## ValueJet - total solution

The compactly designed ValueJet 1204 Eco-Solvent Ultra printer, incorporating latest print head technology and revolutionary i<sup>2</sup> Intelligent Interweaving print technology, is delivered with everything you need to start delivering optimum results right away.

The printer comes complete with a stand with lockable caster wheels and an ink starter set (1x4 CMYK Eco-Solvent Ultra ink cassettes – 220 ml).

Mutoh offers ValueJet customers starter RIP software. Users can choose between Mutoh editions of Scanvec Amiable or Onyx Graphics.

A step-by-step installation guide provides instructions to unpack and assemble the ValueJet 1204 printer in a matter of moments, ready to produce high quality output from day one.

## Optional Take-up

The optional motorised take-up system allows automatic winding of finished prints in front of the printer. The take-up system can handle both 2" and 3" media rolls and is capable of supporting media rolls up to 10 kg.





## 1204 from Mutoh

Printer specifications	ValueJet 1204
Technology	Drop-on-demand Micro Piezo Inkjet Technology. Variable drop mass output between 3.5 ng and 21 ng
Print Resolutions	540 x 720 dpi, 720 x 720 dpi, 1440 x 720 dpi & 1440 x 1440 dpi
Maximum Media Width	1300 mm
Print Width	210 mm – 1200 mm (bi-directional) / 1219 mm (uni-directional)
Media Thickness	Maximum 0.3 mm
Diameter / Core	Maximum: 150 mm / 2" or 3"
Weight	Maximum: 19 kg
Maximum print length	18 m
Colour Channels	4 colour channels – 4 process colour output
Inks	Eco-Solvent Ultra 1 x CMYK set-up
Ink Cassette Capacity / Type	220 ml / smart chip ink type & order sensing
Head / Nozzle configuration	180 nozzles x 8 lines = 1440 nozzles / head
Head height adjustments	1.5 mm / 2.0 mm
Print Modes & Panel Control Options	Uni & Bi-directional output, Intelligent Interweaving (i <sup>2</sup> ), Mirror Output, Multi Copy, Ink Status, Origin Control
LCD Display	Backlight LED – 1 line x 20 characters
Interface	TCP/IP Ethernet 100BASE-TX/10BASE-T, USB 2.0/1.1 only for service purposes
Graphics Command Language	RTL-PASS
Memory	128 MB
Print Distance Accuracy	± 0.25 mm or ± 0.1%, whichever is greater
Right Angle Accuracy	± 0.25 mm or ± 0.1%, whichever is greater
Heater ranges	pre-heater : [30 – 50 °C] platen heater : [30 – 50 °C] after-heater : [30 – 50 °C]
Print Engine Working Environment	Temperature: 20 – 30 °C Humidity: 40 – 60 % (no condensation)
External Dimensions (W x D x H) (Excl. take-up)	1772 x 685 x 1220 mm
Weight (with stand)	71.8 kg
Power Supply	AC 100 – 120 V / AC 220 – 240 V auto-switching
Power Consumption	operation : 1260 W low power mode : 40 W power off : 1 W or less
Noise Level	Operating: 50 dB or less
Standard	VCCI (Class A), FCC (Class A), MET, CB, CE, RoHs

Specifications are liable to changes without prior notice. All trademarks mentioned are property of their respective owners. The machines depicted on this brochure do not necessarily show a standard configuration. For some products, customised configurations are available. For further information, please contact your nearest Mutoh Authorised Reseller.

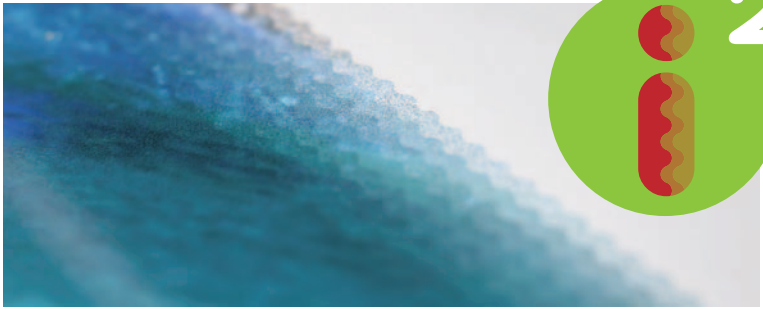
## MUTOH

MUTOH EUROPE N.V.  
Tel.: 32-(0)59-56 14 00  
Fax: 32-(0)59-80 71 17  
E-mail: [mutoh@mutoh.be](mailto:mutoh@mutoh.be)  
<http://www.mutoh.be>  
<http://www.mutoh.eu>

MUTOH Deutschland GmbH  
Tel.: 49-(0)2159 91 34 30  
Fax: 49-(0)2159 91 34 56  
E-mail: [Mutoh-Sales@t-online.de](mailto:Mutoh-Sales@t-online.de)  
<http://www.mutoh.de>

MUTOH AMERICA INC.  
Tel.: (480) 968-7772  
Fax: (480) 968-7990  
E-mail: [Sales@mutoh.com](mailto:Sales@mutoh.com)  
<http://www.mutoh.com>

Distributed by:



## ***i<sup>2</sup> - a revolution in print technology***

- > Intelligent Interweaving, i<sup>2</sup> technology from Mutoh, provides impeccable digital printing quality for both Photo and Sign printing.
- > Quick and simple to set up, printing with i<sup>2</sup> saves time and trouble while producing outstanding results.

Mutoh has taken a totally new approach with i<sup>2</sup> technology (pronounced i squared). Ink is laid down in carefully optimised wave forms, not the straight lines used by all other wide-format inkjet printers. The result is a drastic reduction or even total elimination of the typical difficulties inherent in conventional digital inkjet printing. i<sup>2</sup> technology means the end of defects such as horizontal banding, step mismatch banding, ink mottle and bleed and the visible effects of missing or mis-firing nozzles.

## ***i<sup>2</sup> technology benefits***

- > Impeccable print quality.
- > Excellent workflow as user-friendly set up saves time even with the most challenging images.
- > Bi-directional printing of all images, even the most critical jobs, as wave sequences eliminate banding.
- > Increased ink density yield as the wave patterns superimpose thin ink layers to create an even coating with superb image definition.

Depending on the incorporated head technology and ink type, Mutoh is programming printer-specific optimised print weaving modes for both sign and picture applications.





*Sign/Quality:* Signage and poster applications containing big areas with solid colours, typography and critical gradients

*Picture/Speed:* Non sign images, pictures and photographs

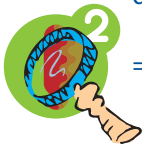


## ValueJet 1204 Performance

Below table explains you what Mutoh's  $i^2$  technology will offer you, depending on the **type of image** you need to print, **the material type** as well as the **distance** at which the print needs to be viewed.

Material Type	Print Mode	Picture	Sign
Uncoated PVC	Graphics 3 720 x 720 dpi, 8 pass, Bi-directional	7 m <sup>2</sup> /h 	3,3 m <sup>2</sup> /h 
Banner & Soft Signage	Banners 4 720 x 720 dpi, 4 pass, Bi-directional	14 m <sup>2</sup> /h 	13 m <sup>2</sup> /h 

$i^2$  = free from typical inkjet artefacts such as horizontal banding, ink bleed and media step mismatch banding, even when viewed close to.



= viewing distance < 1m



= viewing distance between 1 m and 5 m

### Mutoh authorised resellers

Mutoh products are distributed and supported by an extensive network of certified Mutoh authorised resellers extensively trained by the Mutoh headquarters for sales and after-sales support. Mutoh authorised resellers will offer you further product information & insight, possible product configurations, product pricing and return on investment figures to meet your company's objectives. Contact your nearest Mutoh authorised reseller at [www.mutoh.eu](http://www.mutoh.eu).

